

TABLE OF CONTENTS

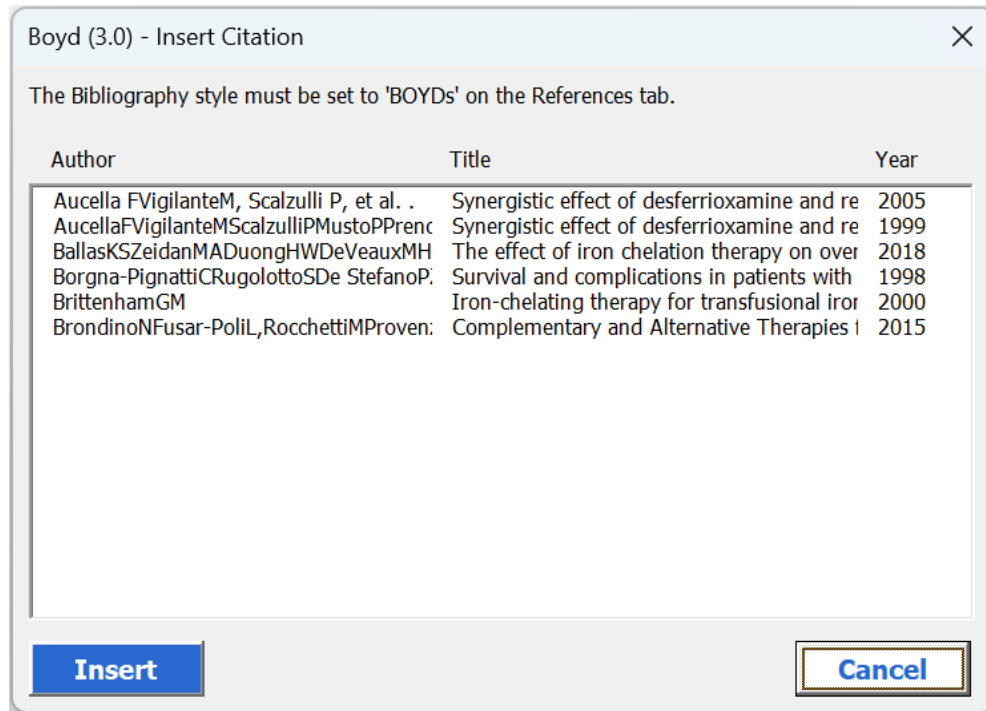
1	CITATIONS/BIBLIOGRAPHY, INSERT CITATION, ORDERING	2
2	CITATIONS/BIBLIOGRAPHY, INSERT CITATION, BLUE	2
3	CITATIONS/BIBLIOGRAPHY, INSERT CITATION, MESSAGE	3
4	DEFECT - REFERENCING, HEADING CROSS REFERENCE.....	4
5	DEFECT - REFERENCING, HEADING CROSS REFERENCE, BLUE	4
6	VALIDATE, STYLES USED INCORRECTLY, MESSAGES	5
7	VALIDATE, STYLES USED INCORRECTLY, FONT SIZE	6
8	VALIDATE, INSTRUCTIONAL TEXT, DELETE ALL BUTTON	6
9	VALIDATE, INSTRUCTIONAL TEXT, BLANK	7
10	VALIDATE, HIGHLIGHTING, IN TABLES	7
11	TABLES, FOOTNOTE TABLE ALIGNMENT.....	8
12	TABLES, IMPORTING STYLES.....	8
13	TABLES, FORMATTING VERTICALLY MERGED CELLS.....	9

1 CITATIONS/BIBLIOGRAPHY, INSERT CITATION, ORDERING

Multiple citations appear in alphabetical order, in the Insert Citation pop-up box, when added to the document all at once.

If a source is added later then it goes to the top of the list, in the Insert Citation pop-up box, and is then added to any in-text citation first.

Can the order be alphabetical even when adding sources throughout document development.



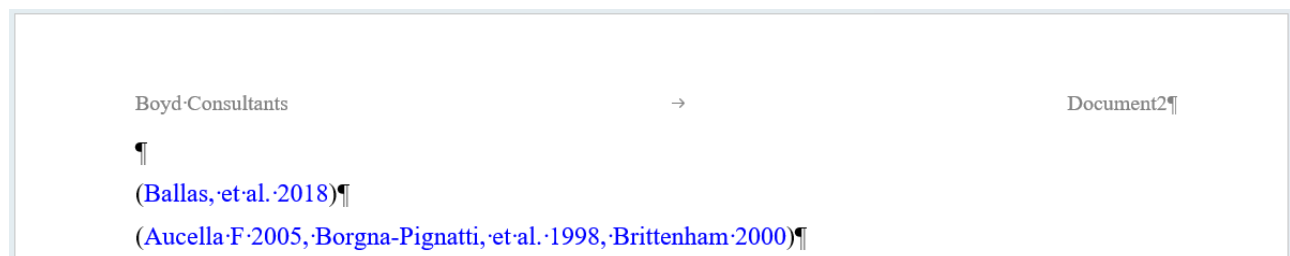
This has been changed.

Please test this in the new version and let me know if the ordering is always alphabetical.

2 CITATIONS/BIBLIOGRAPHY, INSERT CITATION, BLUE

Blue colour for citations lost when field codes updated.

Worked in a previous version but was broken in v2.9.



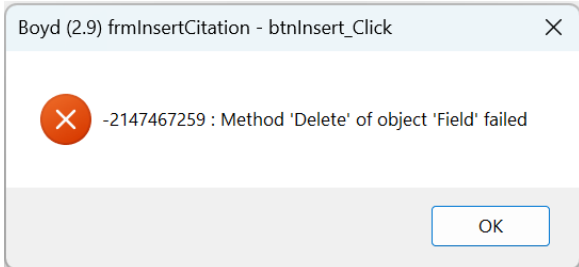
This has been fixed.

3 CITATIONS/BIBLIOGRAPHY, INSERT CITATION, MESSAGE

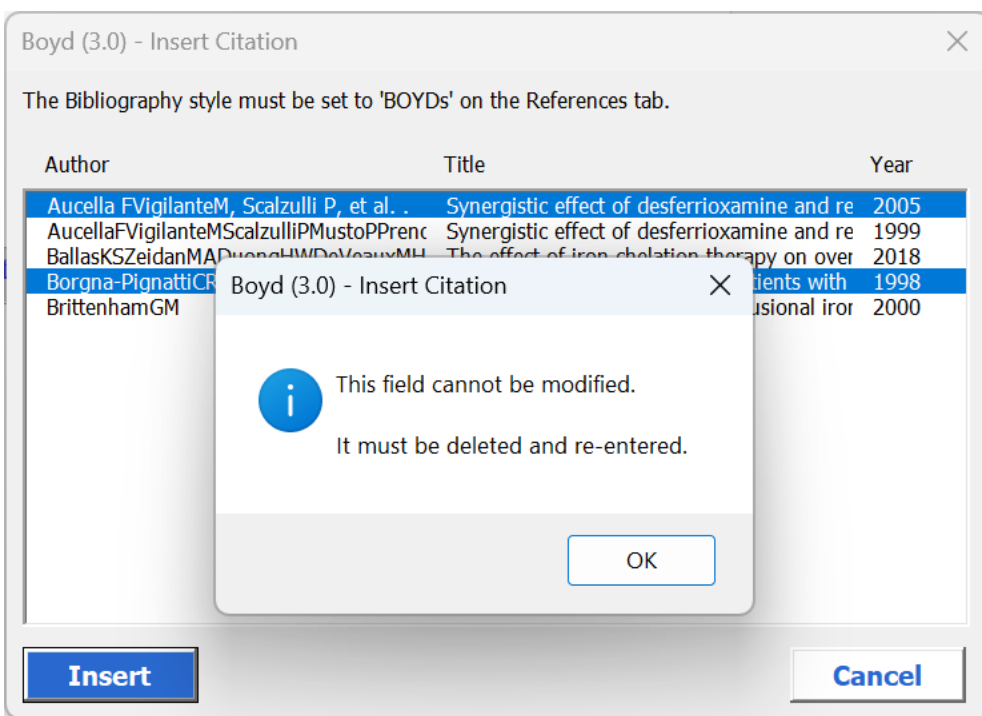
Not sure what this message is about.

It happened when I tried to insert a new citation at another citation without deleting it first.

We are happy to delete and re-enter groups of citations but perhaps we need a pop-up message to say that the current citation(s) should be deleted before a new citation(s) can be added.



A message has been added when a field cannot be deleted.



This has been changed.

4 DEFECT - REFERENCING, HEADING CROSS REFERENCE

The actual cross-reference isn't working for all heading levels/types though.

Section 1: Section 1
Section 2.1: Section 2.1
Section 3.1.1: Section 4 (should be Section 3.1.1)
Section 3.5.3.1: Section 4 (should be Section 3.5.3.1)
APPENDIX B: 3 (should be Appendix B)
Appendix B1: 4 (should be Appendix B1)
Non-numbered heading (Table of Contents): Section 0 (should be Table of Contents)

This is still being investigated.

5 DEFECT - REFERENCING, HEADING CROSS REFERENCE, BLUE

This works perfectly apart from when there is no text following then the colour continues to be blue when author continues to type.

Insert a cross reference at the end (without a space) Section Inbcng

Insert a cross reference at the end (with a space) Section Ibgfsbfs

This is still being investigated.

6 VALIDATE, STYLES USED INCORRECTLY, MESSAGES

The following styles are found but are correct:

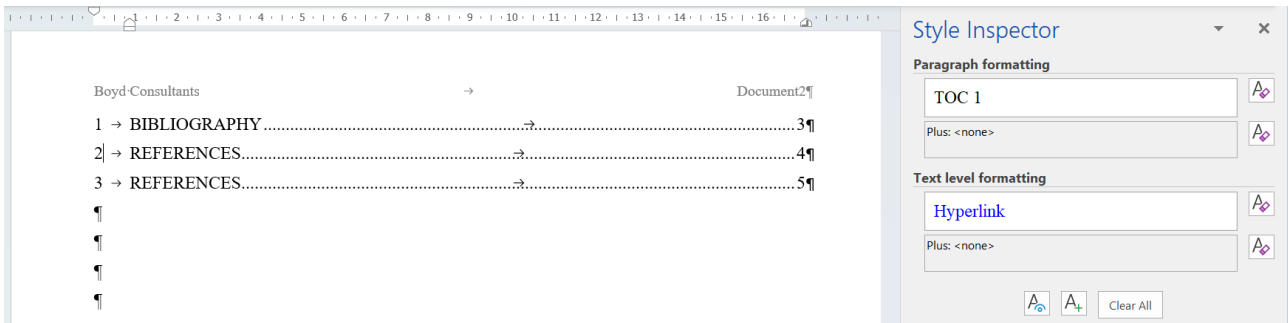
Instructional Text wrong colour

This is now being ignored (also ignoring Example Text).

TOC wrong colour

Is this because they are hyperlinks but not blue.

This was being flagged as "TOC 1 incorrect colour".



It looks like the character style is Hyperlink (and blue) but the paragraph style is TOC which is black.

This is now being ignored.

Table of Figures wrong colour

Have not been able to reproduce this.

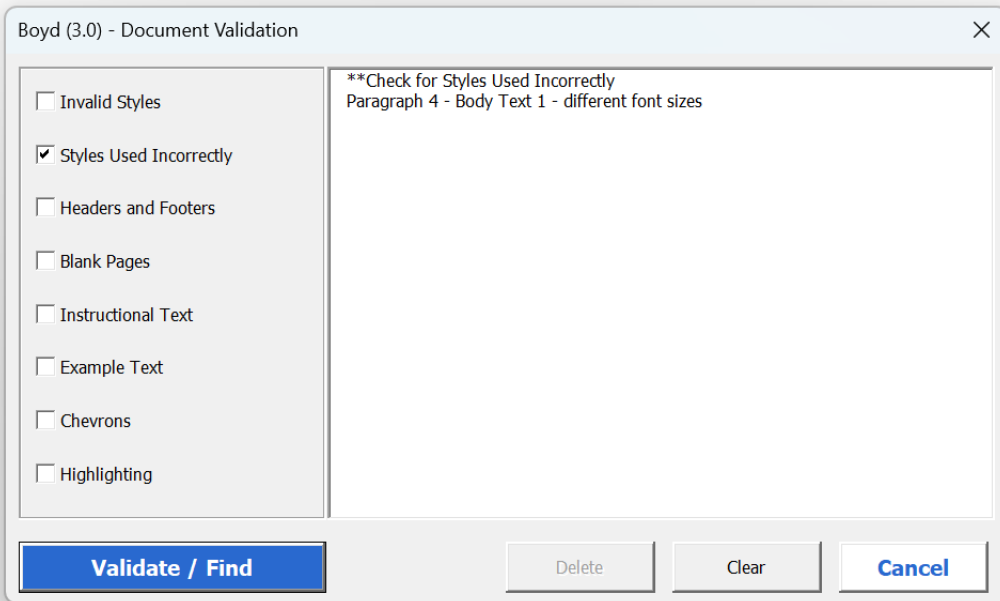
Please test this in the new version and let me know if it is still happening.

7 VALIDATE, STYLES USED INCORRECTLY, FONT SIZE

When wrong font size is only part of a paragraph, e.g. one word, it is found with following error:

Paragraph 7 - Body Text 1 - font size 99999

To make your document look professionally produced, Word provides header, footer, cover page, and text box designs that complement each other. For example, you can add a matching cover page, header, and sidebar. Click Insert and then choose the elements you want from the different galleries.

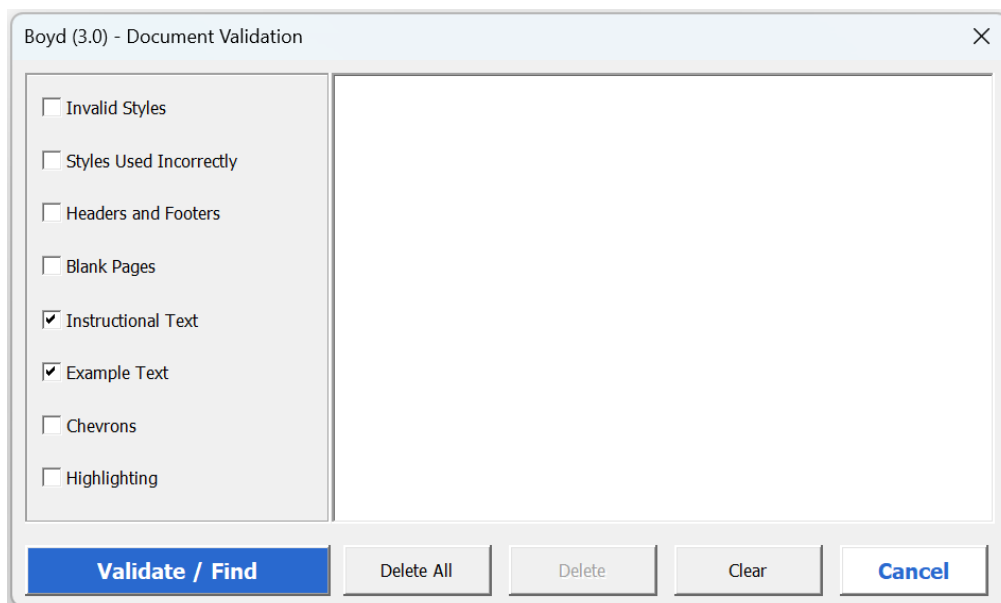


This has been changed.

8 VALIDATE, INSTRUCTIONAL TEXT, DELETE ALL BUTTON

Button to delete all Instructional Text/Example Text appears disabled (deliberately).

This is OK but is a bit unusual.

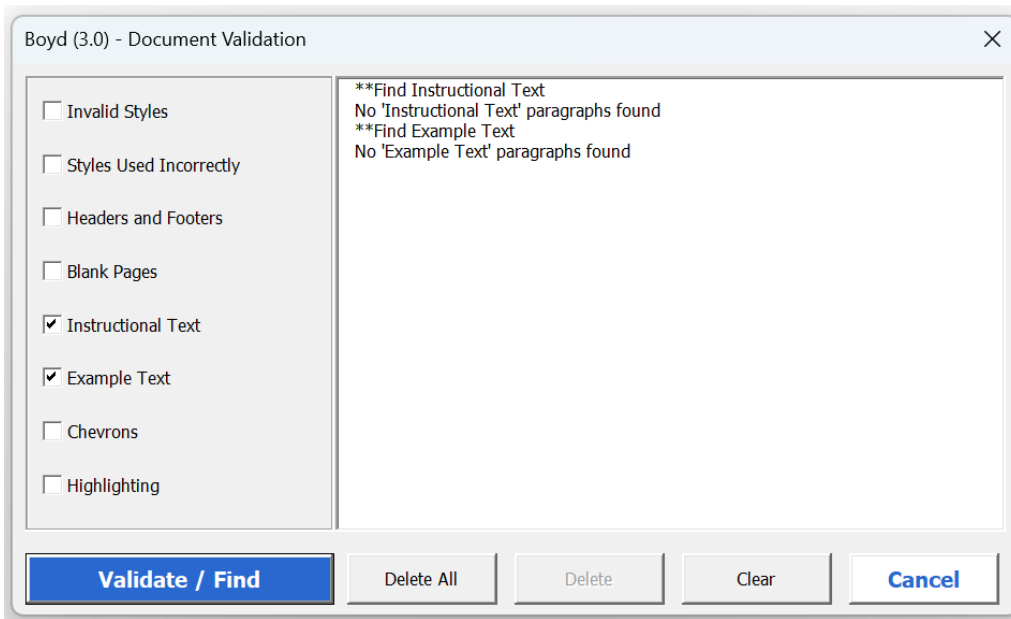


The font colour of this button has been changed so it is consistent with the Delete and Clear buttons.

This has been changed.

9 VALIDATE, INSTRUCTIONAL TEXT, BLANK

Could there be a message when none is found because currently the box remains blank.



This has been added.

10 VALIDATE, HIGHLIGHTING, IN TABLES

Works until you hit a table with highlighting and at that point it gets into a continuous loop.

Table¹ → ¶

□	□	□	□	□
Text1□	Text2□	□	□	□
Text3□	Text4□	□	□	□
□	□	□	□	□
□	□	□	□	□
□	□	□	□	□

Video provides a powerful way to help you prove your point. When you click Online Video, you can paste in the embed code for the video you want to add. You can also type a keyword to search online for the video that best fits your document. ¶

Boyd (3.0) - Document Validation

- Invalid Styles
- Styles Used Incorrectly
- Headers and Footers
- Blank Pages
- Instructional Text
- Example Text
- Chevrons
- Highlighting

**Find Highlighting
Characters 44-49 - Highlighting found
Characters 50-55 - Highlighting found
Characters 241-258 - Highlighting found

Validate / Find Delete Clear Cancel

This has been fixed.

11 TABLES, FOOTNOTE TABLE ALIGNMENT

The Footnote Table style has a paragraph formatting of Alignment Left.

No paragraph formatting of alignment left is needed, so it's the same as Footnote Lettering.



Video provides a powerful way to help you prove your point. When you click Online Video, you can paste in the embed code for the video you want to add. You can also type a keyword to search online for the video that best fits your document. To make your document look professionally produced, Word provides header, footer, cover page, and text box designs that complement each other.

The left alignment has been removed from the "Footnote Table" style.

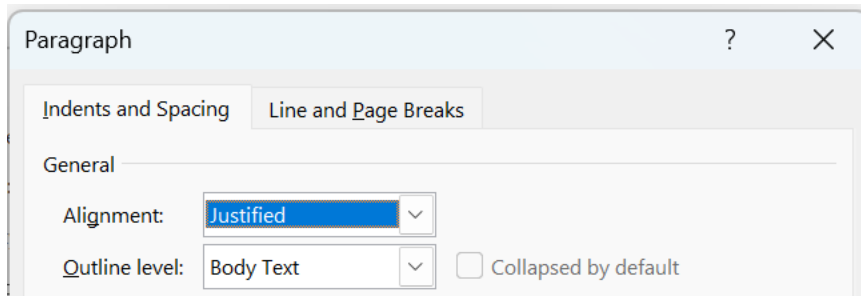
This has been changed.

12 TABLES, IMPORTING STYLES

Are the footnote styles imported using the Import button.

The change for Footnote Lettering wasn't reflected when Import was clicked.

I can see that it has been updated in the New Template though.



Both the footnote styles are being imported.

However the paragraph alignment was not being explicitly "inherited" from the "Body Text 1" style and was staying unchanged.

This has been fixed.

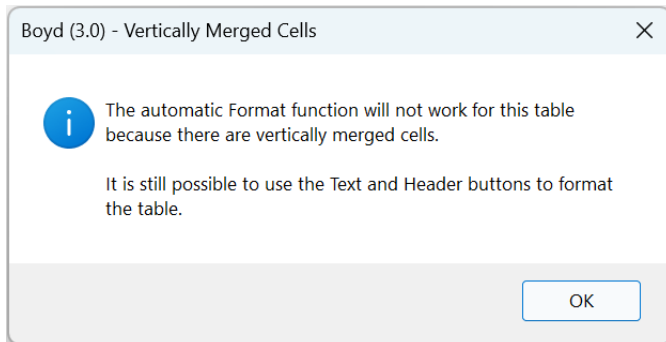
13 TABLES, FORMATTING VERTICALLY MERGED CELLS.

Would it be possible to have a pop-up to let us know that the Format button hasn't worked/isn't working because of vertically merged cells.

At the moment, it doesn't do it but there is no indication that nothing has happened.

Authors may keep pressing the Format button.

Message - The automatic Format function will not work for this table because there are vertically merged cells. It is still possible to use the Text and Header buttons to format the table.



This has been added.